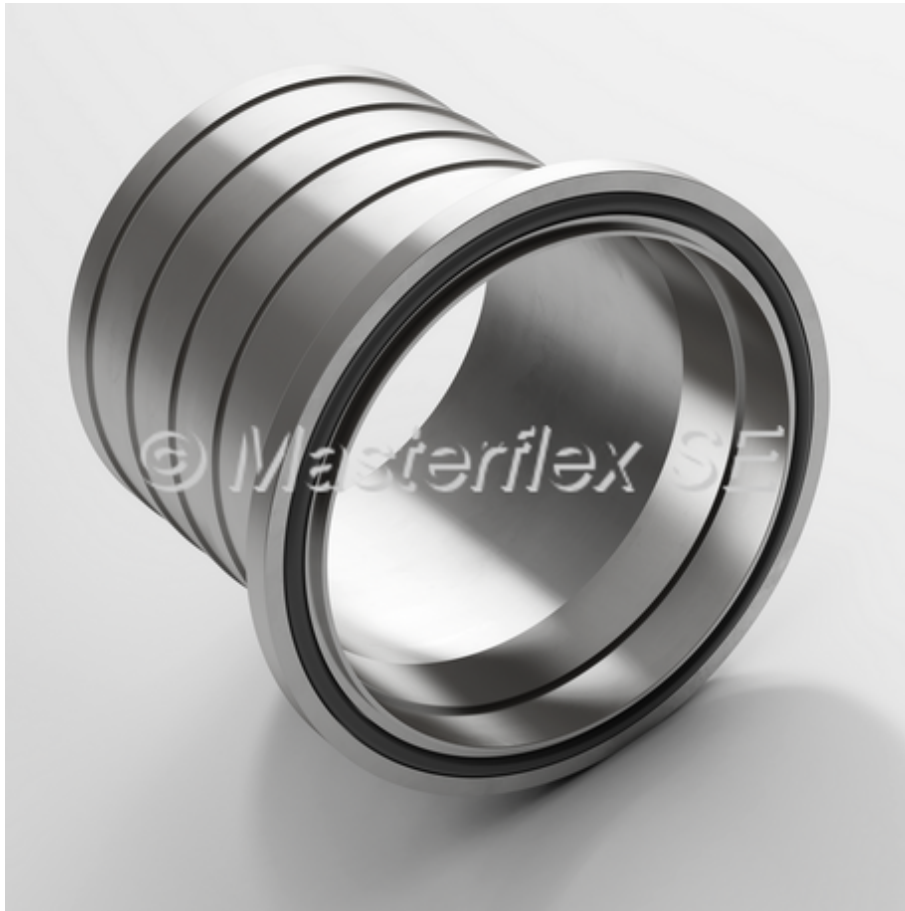


## Cone Flange with Metal Sockets

in acc. with DIN 3016



Technical Drawing



### Material

- steel (St 37)

### Applications

- for quick connectors from hoses to
- Reductions with cone flanges
- Combiflex PU cone flanges
- Steel piping with cone flanges
- Pipe bends/elbows with cone flanges

### Properties

- watertight
- good flow characteristics
- easy to install when using quick-fit clamp connectors
- cone flange in accordance with DIN 3016
- connection options to pipes and piping acc. to DIN 2448 and DIN 2458

### Product Variations

DN	total length	weight/piece	old article no.	new article no.
	mm	kg		

50	104	0,54	641-050-10V	002411
50	104	0,54	641-050-10M	002410
65	108	0,68	641-065-10V	002414
65	108	0,68	641-065-10M	006094
80	108	0,9	641-080-10V	002418
80	108	0,9	641-080-10M	002417
100	128	1,41	641-100-10V	002422
100	128	1,41	641-100-10M	002421
125	133	2,02	641-125-10V	002426
125	133	2,02	641-125-10M	002425
150	133	3,07	641-150-10V	002430
150	133	3,07	641-150-10M	002429
160	133	3,47	641-160-10V	002434
160	133	3,47	641-160-10M	002433
180	133	4,09	641-180-10V	002436
180	133	4,09	641-180-10M	002435
200	133	5,09	641-200-10V	002438
200	133	5,09	641-200-10M	002437
250	133	6,08	641-250-10V	002441
250	133	6,08	641-250-10M	002440

All data refers to a medium and ambient temperature of +20 °C.  
 \* Refers to the inner hose lining  
 Subject to technical changes and colour deviations.

#### Available on request

- Available on request in stainless steel

#### Technical Data

DN hose	D: outer-Ø flange	Da: outer Ø clamp range	Di: inner Ø	L: total length	t1: socket length	F: flange height
50	78	50	54,5	104	84	2,5
65	91	65	70,3	108	84	5,1
80	104	80	82,5	108	84	5,1
100	129	100	107,1	128	104	5,1
125	161	125	131,7	133	104	8,6
150	190	150	159,3	133	104	8,6
160	200	160	167,8	133	104	8,6
180	216	180	182,9	133	104	8,6
200	242	200	207,3	133	104	8,6
250	295	250	260,4	133	104	8,6