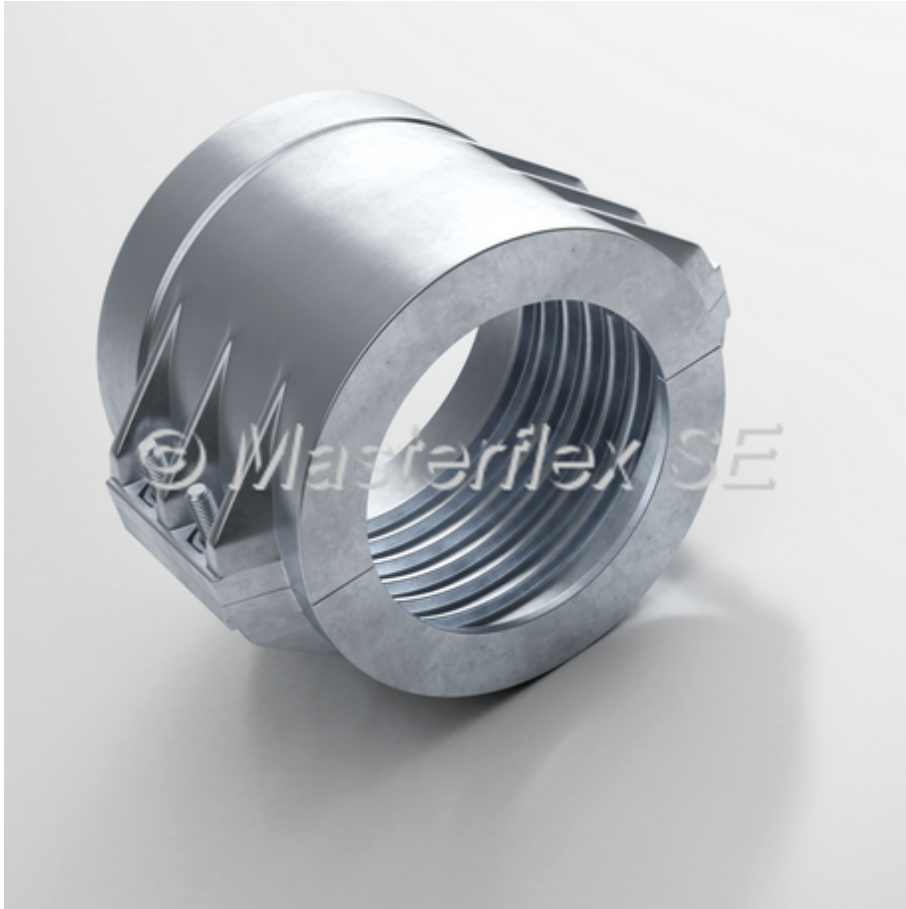


Clamp Collars, screwed

acc. to DIN EN 14420-3



Material

- screws and nuts: galvanised steel
- clamp collar: aluminium

Applications

- Versatile applications for spiral hoses from the Masterflex SE hose range when using PU hose sleeves

Properties

- robust
- light
- simple mounting

Product Variations

DN	clamping range	extent	no. screws	weight/piece	type	old article no.	new article no.	inventory-item
	mm			kg				
38	57-60	38x10	4xM6x20	0,18	L/H/HX/Inline	625-038-700	002209	?
40	58-61	40x10	4xM6x20	0,19	Inline/Performance	625-040-700	002210	

50	64-67	50x8	4xM8x25	0,27	L/H	625-050-701	002211	?
50	69-71	50x10	4xM8x25	0,31	HX/Inline/Performance	625-050-702	002212	
65	84-87	65x10	4xM8x25	0,45	L/H/HX/Inline/Performance	625-065-700	002213	
80	99-102	80x10	4xM8x25	0,51	L/H/HX/Inline/Performance	625-080-700	002214	
100	114-119	100x8	4xM10x40	1,19	L/H	625-100-701	002215	?
100	126-130	100x14	4xM10x40	1,35	HX/Inline/Performance	625-100-702	002216	
125	143-148	125x10	6xM10x40	1,4	L/H	625-120-700	002217	
125	149-154	125x13	6xM12x50	2,65	HX/Inline/Performance	625-125-700	002218	
150	168-174	150x10	6xM12x50	3,75	L/H	625-140-700	002219	
150	174-180	150x13	6xM12x50	3,3	HX/Inline/Performance	625-150-700	002220	?
200	230-239	200x16	8xM12x60	6,75	L/H/HX/Inline	625-200-700	002221	?

All data refers to a medium and ambient temperature of +20 °C.

* Refers to the inner hose lining

Subject to technical changes and colour deviations.